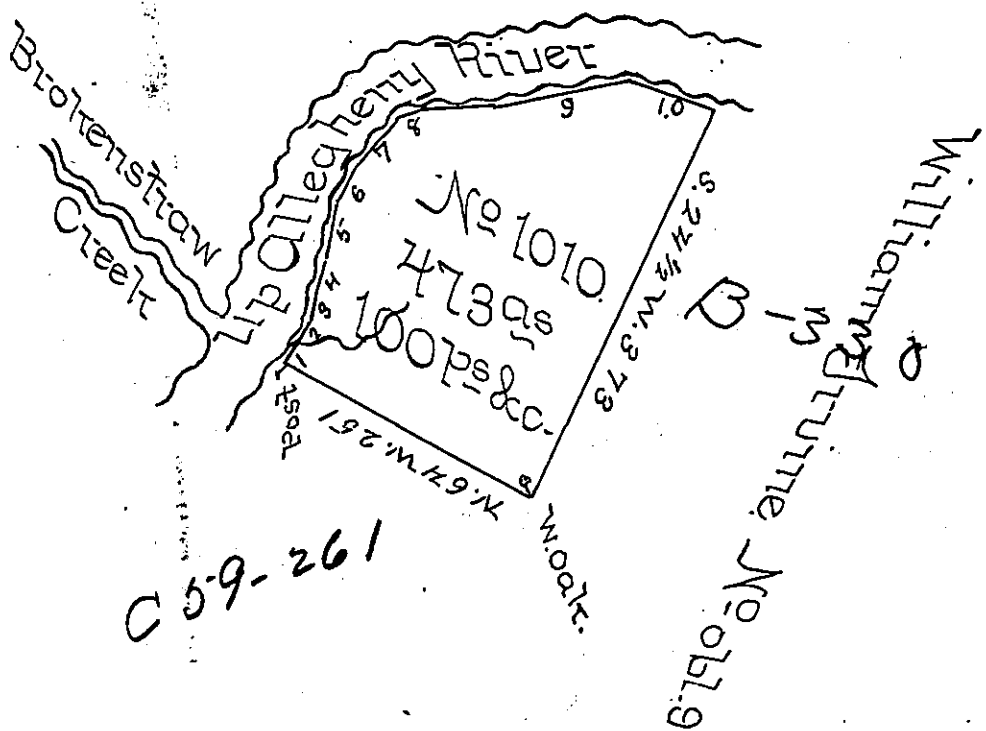


Courses & distances up  
River from post.

- No 1 N. 41. E 28
- " 2 N. 22 E. 20
- " 3 N. 14 E. 18
- " 4 N. 11 E. 86
- " 5 N. 27 E. 36
- " 6 N. 43 E. 56
- " 7 N. 73 E. 22
- " 8 N. 87 E. 60
- " 9 N. 78 E. 126
- " 10 S. 71 E. 78
- " 11 N. 18 E. 5 to a post



Draft of a tract of land situate in Brokenstraw Township, Warren county, east of the Allegheny river, containing four hundred seventy three acres, one hundred perches and allowance Surveyed 22<sup>nd</sup> November 1819, in pursuance of an order of Resurvey granted to Callender Druime Esq<sup>r</sup> dated 10<sup>th</sup> June 1819, by virtue of a Warrant granted to said Druime dated 5<sup>th</sup> May 1798 No 1010.

Jacob Spangler Esq<sup>r</sup>  
Surveyor General

John Druime D.S.

IN TESTIMONY that the above is a copy of the original remaining on file in the Department of Internal Affairs of Pennsylvania, made conformably to an Act of Assembly approved the 16th day of February, 1833, I have hereunto set my Hand and caused the Seal of said Department to be affixed at Harrisburg, this first day of November 1898.

James W. Latta  
Secretary of Internal Affairs.